

Royal Liverpool Emergency Department Monthly Bulletin: October 2010 to September 2011

This bulletin provides a breakdown of all injury attendances at the Royal Liverpool Emergency Department (ED) between October 2010 and September 2011.

Between October 2010 and September 2011 there were 34,086 injury attendances, peaking in January (n=3,341), with September (n=2,077) having the fewest. **Figure 1** gives a breakdown of monthly injury attendances by gender, illustrating that for all months there were more male (54%) injury attendances than female presenting at the Royal Liverpool ED.

The majority of injury attendances were made by people over the age of 14 years (**Figure 2**). The low number of injury attendances under the age of 15 presenting at the Royal Liverpool ED could possibly be due to the close proximity of a local children's ED (Alder Hey).

Table 1 details the injury group of attendees. The majority (71%) of injury attendances have been classified as other injury. This category includes injuries such as head injuries and arm injuries, for example. Almost three quarters (72%) of injuries occurred in the home (**Table 2**).

Nearly four in ten (39%) injury attendances were discharged from the ED and over three in ten (31%) were admitted to hospital (**Table 3**).

Assault questionnaire

The Royal Liverpool ED collects additional information on assault attendances and a summary of this data is provided in this report. More detailed information collected by staff at the Royal Liverpool ED on issues such as the specific location of assault (e.g. pub name/street), is provided by TIIG to local agencies such as Citysafe in a separate report to the one produced here.

Assault attendees presenting at the Royal Liverpool ED between October 2010 to September 2011 were mainly male (77%) and 56% were aged between 15 and 29 years.

Table 4 shows that where data was collected, 13% of assault attendances had consumed alcohol within three hours prior to their attack. Three quarters (75%) of all assault locations were unknown during October 2010 to September 2011. Of those known, over half (55%) occurred on the street (**Table 5**).

Table 6 shows that the relationship between assault attendees and those involved in the assault was unknown in the majority (77%) of incidents. Where data was collected, 69% of assault patients had been assaulted by a stranger.

Table 7 shows the weapon used in the assaults. Of those with a known weapon type, 66% were attacked with a body part, such as a fist, 6% with a knife and 4% with a blunt object.

² Please note that although a patient may complete the assault patient questionnaire data may not be provided for each question as the patient can refuse or be unable to answer particular questions. Data provided in the following analyses represent those patients who completed each question.

Figure 1: Gender of injury attendances by month, October 2010 to September 2011

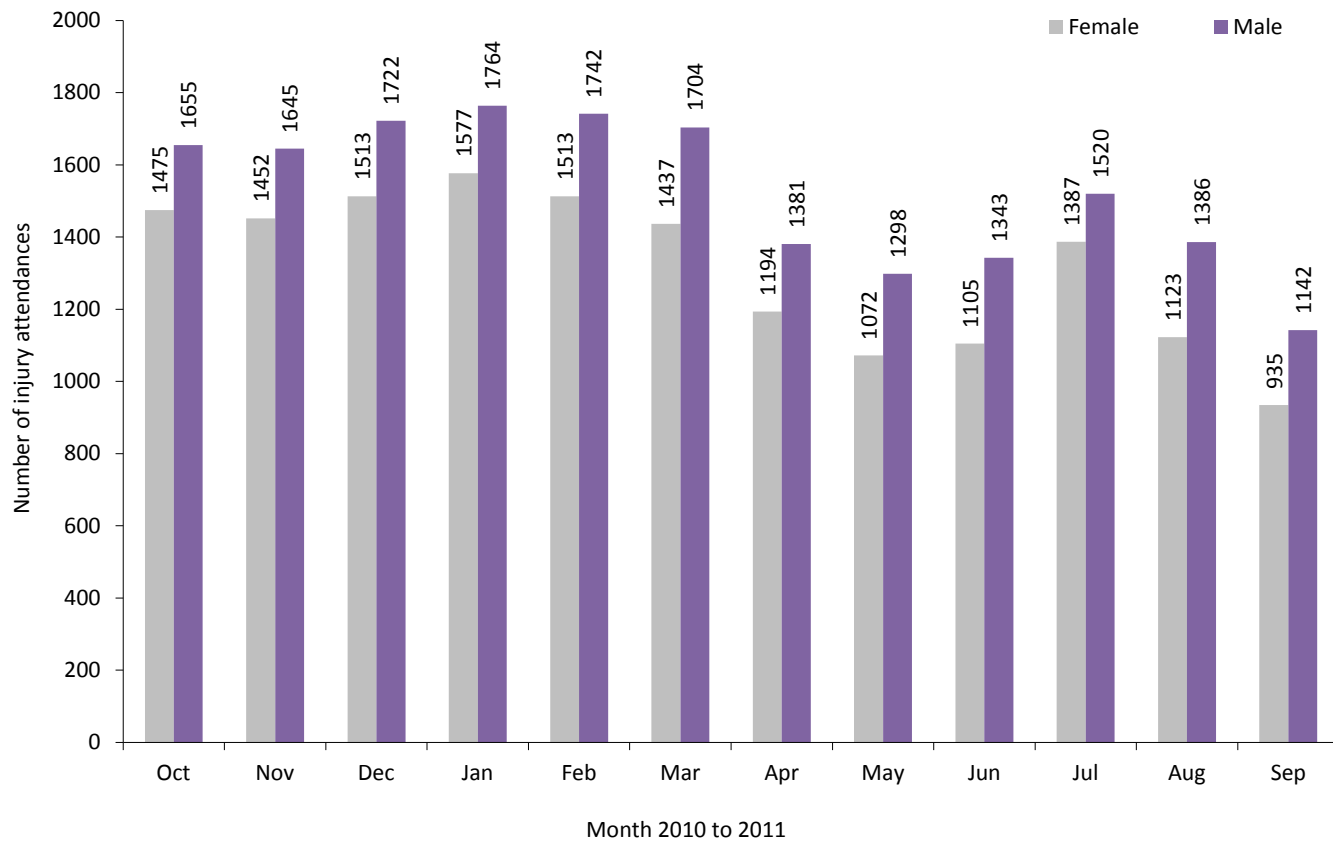


Figure 2: Age group of injury attendances by month, October 2010 to September 2011

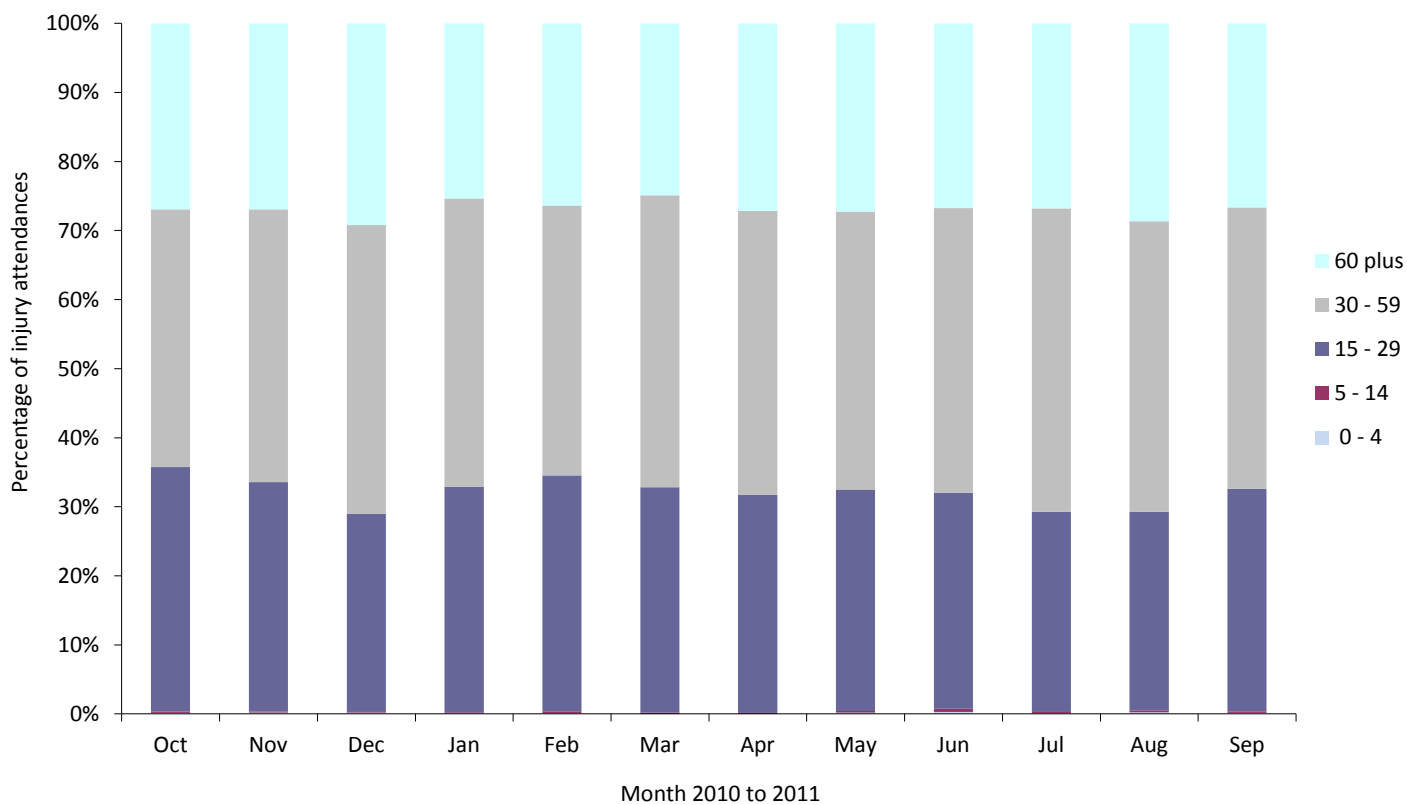


Table 1: Injury attendances by injury group and month, October 2010 to September 2011

Injury group	Oct	Nov	Dec	Jan	Feb	Mar	Apr	May	Jun	Jul	Aug	Sep	Total	%
Other injury	2241	2312	2264	2570	2510	2380	1781	1627	1681	2065	1648	1217	24296	71
Fall	359	322	565	322	271	275	319	293	337	331	332	340	4066	12
Assault	170	141	141	190	188	165	184	156	162	197	203	160	2057	6
Overdose	133	96	92	114	110	105	103	104	92	110	134	118	1311	4
Sport injury	113	99	64	53	79	110	79	80	72	101	97	118	1065	3
Road traffic collision	79	80	64	45	60	63	60	59	54	56	54	67	741	2
Burn	22	26	26	21	20	19	24	27	25	21	23	32	286	1
Self-harm	13	21	19	26	17	24	26	24	25	26	18	25	264	1
Total	3130	3097	3235	3341	3255	3141	2576	2370	2448	2907	2509	2077	34086	100

Table 2: Injury attendances by location of incident and month, October 2010 to September 2011

Location	Oct	Nov	Dec	Jan	Feb	Mar	Apr	May	Jun	Jul	Aug	Sep	Total	%
Home	2225	2258	2329	2588	2546	2336	1765	1577	1634	2126	1799	1354	24537	72
Public place	508	454	473	386	373	384	439	424	386	385	363	379	4954	15
Other	324	306	381	314	269	326	329	308	373	338	272	270	3810	11
Work	47	52	46	35	33	60	25	37	40	41	50	43	509	1
Leisure facility	26	27	6	18	34	35	18	24	15	17	25	31	276	1
Total	3130	3097	3235	3341	3255	3141	2576	2370	2448	2907	2509	2077	34086	100

Table 3: Injury attendances by disposal method and month, October 2010 to September 2011^{3,4,5}

Disposal	Oct	Nov	Dec	Jan	Feb	Mar	Apr	May	Jun	Jul	Aug	Sep	Total	%
Discharged	1181	1275	1266	1129	1134	1230	1030	949	1072	1144	956	770	13136	39
Admitted	1025	983	981	1082	1069	966	745	721	723	821	807	653	10576	31
Discharge - follow-up by GP	205	178	247	380	340	274	251	227	169	301	206	161	2939	9
Left - before being treated	249	229	278	219	208	169	216	109	58	77	67	106	1985	6
Referred to fracture clinic	146	148	225	203	177	177	121	103	97	123	115	84	1719	5
Referred to other HCP	105	110	85	113	129	137	89	73	103	132	112	88	1276	4
Left - refused treatment	30	21	16	13	12	17	14	71	115	138	121	105	673	2
Referred to ED clinic	70	59	38	54	66	57	33	36	42	81	40	46	622	2
Referred to OPD clinic	57	44	56	85	72	59	37	38	41	46	42	28	605	2
Transfer to other HCP	33	29	22	34	29	34	30	28	8	9	12	15	283	1
Other	21	16	12	22	14	13	7	13	13	33	23	18	205	1
Patient died in department	<10	***	<10	***	***	***	***	***	***	***	***	***	56	0
Restored to ward	***	***	***	***	***	***	***	***	***	***	***	***	11	0
Total	3130	3097	3235	3341	3255	3141	2576	2370	2448	2907	2509	2077	34086	100

Table 4: Assault attendees' alcohol consumption within three hours prior to the assault by month, October 2010 to September 2011

Alcohol consumption	Oct	Nov	Dec	Jan	Feb	Mar	Apr	May	Jun	Jul	Aug	Sep	Total	%
Unknown	157	111	89	143	124	114	128	119	137	148	145	127	1542	75
Yes	6	17	33	30	37	30	32	21	8	9	31	15	269	13
No	***	11	12	12	21	19	16	<10	12	35	20	14	185	9
Unable to answer	***	***	***	***	***	***	5	7	***	***	***	***	38	2
Refused to answer	***	***	6	***	***	***	***	***	***	***	***	***	23	1
Total	170	141	141	190	188	165	184	156	162	197	203	160	2057	100

³ *** Please note that all numbers less than five have been suppressed in line with patient confidentiality and if there is only one number less than five in a category then two numbers will be suppressed at the next level (e.g. <6) in order to prevent back calculations from totals.

⁴ OPD= out-patient department, HCP=health care provider.

⁵ Please note percentages might not add to one hundred due to rounding.

Table 5: Assault attendances by location of incident and month, October 2010 to September 2011

Assault location	Oct	Nov	Dec	Jan	Feb	Mar	Apr	May	Jun	Jul	Aug	Sep	Total	%
Unknown	157	113	89	143	124	114	128	120	138	148	145	127	1546	75
Street	5	14	27	27	31	27	31	24	18	25	29	24	282	14
Bar/pub	***	7	8	9	13	7	7	***	***	***	5	***	63	3
Your home	***	***	5	6	***	6	***	5	***	13	***	***	48	2
Club	***	***	***	***	***	***	***	***	***	***	10	***	31	2
Other	***	***	***	***	6	***	***	***	***	***	***	***	29	1
Someone else's home	***	***	***	***	***	***	***	***	***	***	***	***	23	1
Refused to answer	***	***	***	***	***	***	***	***	***	***	***	***	13	1
Workplace	***	***	***	***	***	***	***	***	***	***	***	***	13	1
Unable to answer	***	***	***	***	***	***	***	***	***	***	***	***	9	0
Total	170	141	141	190	188	165	184	156	162	197	203	160	2057	100

Table 6: Assault attendances by relationship with attacker and month, October 2010 to September 2011

Relationship with attacker	Oct	Nov	Dec	Jan	Feb	Mar	Apr	May	Jun	Jul	Aug	Sep	Total	%
Unknown	160	114	90	147	127	117	134	121	140	151	150	129	1580	77
Stranger	8	20	37	25	52	32	32	25	16	26	34	20	327	16
Acquaintance/friend	***	***	5	***	***	5	10	***	***	9	***	***	49	2
Partner	***	***	***	***	***	***	***	***	***	***	***	***	25	1
Bouncer	***	***	***	5	***	***	***	***	***	***	5	***	20	1
Unable to answer	***	***	***	***	***	***	***	***	***	***	***	***	20	1
Family member	***	***	***	***	***	***	***	***	***	5	***	***	12	1
Refused to answer	***	***	***	***	***	***	***	***	***	***	***	***	11	1
Work client/customer	***	***	***	***	***	***	***	***	***	***	***	***	6	0
Ex-partner	***	***	***	***	***	***	***	***	***	***	***	***	***	0
Work mate/colleague	***	***	***	***	***	***	***	***	***	***	***	***	***	0
Police	***	***	***	***	***	***	***	***	***	***	***	***	***	0
Total	170	141	141	190	188	165	184	156	162	197	203	160	2057	100

Table 7: Assault attendances by method of attack and month, October 2010 to September 2011

Method of attack	Oct	Nov	Dec	Jan	Feb	Mar	Apr	May	Jun	Jul	Aug	Sep	Total	%
Unknown	158	113	92	146	126	114	129	119	139	148	148	128	1560	76
Body part (e.g. fist)	10	14	30	31	37	37	38	18	16	39	37	22	329	16
Other	***	***	***	***	9	***	***	***	***	6	***	***	40	2
Unable to answer	***	***	***	***	***	***	***	7	***	***	7	***	38	2
Knife	***	***	5	***	***	***	***	5	***	***	***	***	28	1
Blunt object	***	***	***	***	***	***	***	***	***	***	***	***	22	1
Bottle	***	5	***	***	5	***	***	***	***	***	***	***	21	1
Glass	***	***	***	***	***	***	***	***	***	***	***	***	10	0
Refused to answer	***	***	***	***	***	***	***	***	***	***	***	***	9	0
Total	170	141	141	190	188	165	184	156	162	197	203	160	2057	100

Published December 2011

Nicola Davenport (Merseyside and Cheshire TIIG officer)

Centre for Public Health, Liverpool John Moores University,

2nd Floor, Henry Cotton Building, 15-21 Webster Street, Liverpool, L3 2ET

Tel: 0151 231 4500, Email: N.M.Davenport@ljmu.ac.uk

Website: www.tiig.info (please note data requests should be made through the website)